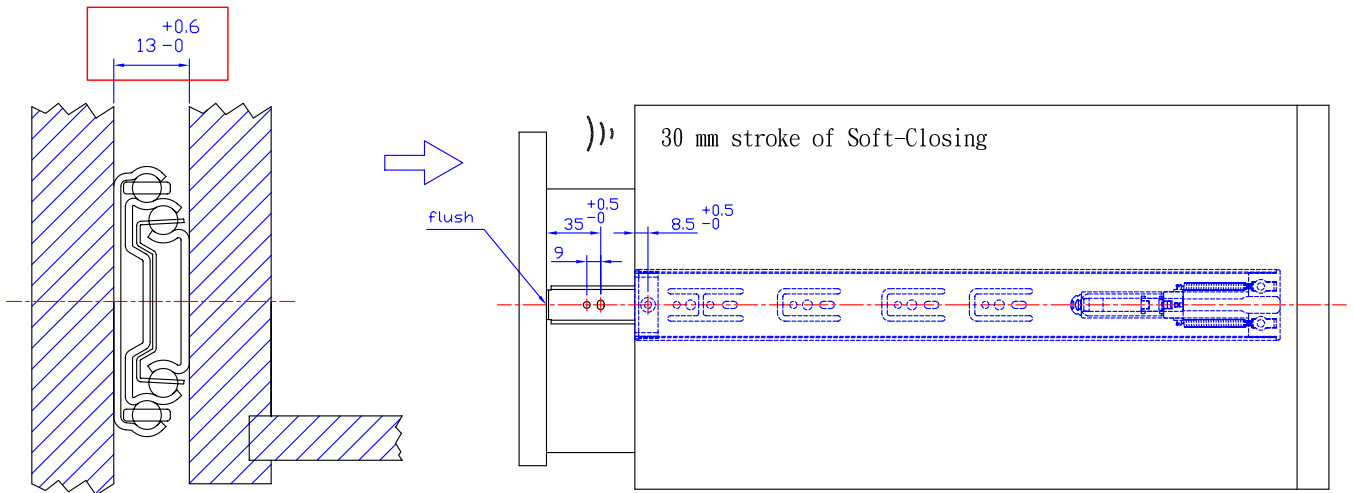
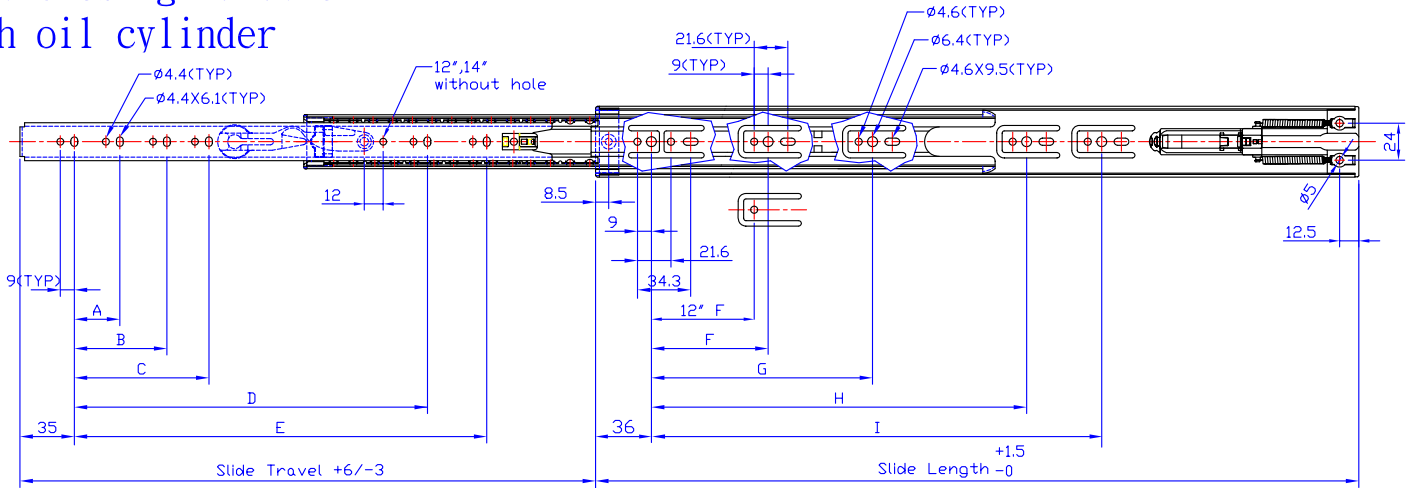




4070-00

- 30 mm stroke of Soft-Closing
- Pull force 3.2 - 3.5 kg
- Soft-closing function built in slide, easy for installation
- Non-handed Disconnect Release
- 45 kg./100 lbs. loading at 20"
- Electro-Zinc plated with clear, yellow or black chromate, or Cr-Free galvanized steel

Soft-closing function With oil cylinder



mm

SIZE	Slide Length	Slide Travel	Over Extension	Load Rating	A	B	C	D	E	F	G	H	I
12"	300	238	-62	20					156	119			
14"	350	305	-45	25					200	128			
16"	400	378	-22	35	96				256	128	208		
18"	450	430	-20	40	128				294	128	256		
20"	500	482	-18	45	96	160			344	128	304		
22"	550	533	-17	40	96	160	352		394	128	224	352	
24"	600	584	-16	35	128	192	384		444	128	224	352	
26"	650	635	-15	35	128	224	416		494	128	224	352	448
28"	700	685	-15	35	128	224	416	480	544	128	224	352	496

